



# Pretoria Art Museum

www.pretoriaartmuseum.co.za

e-news

December 2009 / January 2010

SPORT, RECREATION, ARTS AND CULTURE DEPARTMENT

*The staff of the Pretoria Art Museum  
wish you a joyful festive season!*

## AN AFFORDABLE THRILL!

Visit the Art Museum during the festive season.

**Admission only R6,00 per adult and R4,00 per learner!**

We will close on 24 December and re-open on 4 January 2010.

## WHAT'S ON

### FORGOTTEN TREASURES FROM THE PRETORIA ART MUSEUM COLLECTION

26 November to 23 December 2009

Albert Werth Hall

A selection of paintings, sculptures and prints from the Pretoria Art Museum's permanent collection that have not been exhibited in a long time can be viewed in the Albert Werth Hall from 26 November to 23 December. Works by Sydney Kumalo, Noria Mabaso, Paul Emmanuel and Cecil Skotnes are included.

This exhibition is dedicated to *Yimeka Wilson Siweya*.



18 February 1949 - 20 November 2009

Wilson was a dear colleague and part of the Art Museum family from 1975.

*Your smile is engraved in our minds and your voice still echoes in the vast spaces of the Museum ...*

Our condolences go to his family and friends.

### PELMAMA PERMANENT ART COLLECTION DONATION

*Until 28 February 2010*

North Gallery and Henry Preiss Hall

In January 1991 the Pretoria Art Museum received the first donation from Mr Fernand Haenggi. It consisted of graphic artworks and a large collection of ceramics. Mr Haenggi was a dynamic figure in the South African art world from 1961 until 1993, and also the driving force behind PELMAMA, when he decided to settle in Switzerland, his home country. Artworks from the PELMAMA Permanent Art Collection were then donated or given on long-term loan to museums throughout South Africa. In the process the Pretoria Art Museum received another large donation as well as more artworks on loan. These artworks became an integral part of our exhibitions. In January 2009 the Pretoria Art Museum received as donation all the remaining PELMAMA artworks that were on long-term loan to us at that stage. With this exhibition the Pretoria Art Museum would like to acknowledge the generosity of Mr Fernand Haenggi for this tremendous donation.



## **POLLY STREET AND RORKE'S DRIFT ARTWORKS**

*Until December 2009*

*Albert Werth Hall*

This exhibition, compiled from the permanent collection of the Pretoria Art Museum, shows the works of artists who studied at the Polly Street and Rorke's Drift art centres. The exhibition has been made possible by a donation of a portfolio of Polly Street artists by a former lecturer at the centre and artist, Fred Schimmel.

The exhibition has been curated to cover a specific section of the school syllabus and it gives teachers and learners access to some original artworks of artists who studied at the two centres.

## **A STORY OF SOUTH AFRICAN ART**

*Until December 2009*

*South Gallery*

A selection of artworks from the permanent collection of the Museum tells a brief story of South African art from the time of the first San artists. This selection includes the works of early 20<sup>th</sup> century painters, Resistance artists of the 1980s and artists of the 21<sup>st</sup> century.

## **COROBRIK COLLECTION**

*Until December 2009*

*Glass Gallery*

A selection of ceramics, representing the development of studio ceramics and the work of traditional rural potters of South Africa over the past thirty years, is on display.

## **STUDY COLLECTION**

*Until December 2009*

*Information Centre*

Art media and techniques are illustrated in the Information Centre.

## **REFERENCE LIBRARY**

---

**The art reference library at the Pretoria Art Museum can be visited by appointment from Tuesdays to Fridays between 10:00 and 15:00. Contact Mmutle Kgokong at [arthurk@tshwane.gov.za](mailto:arthurk@tshwane.gov.za).**

## **CHILDREN'S GALLERY**

---

The Children's Gallery is a unique, fun space with hands-on, interactive activities geared towards young children, including children who have learning barriers and those who are physically and mentally challenged. In this space, children are introduced to art fundamentals in a playful manner. The long-term aim is to instil aesthetic awareness and to stimulate discernment, visual literacy and individual creativity, all of which are prerequisites for lateral thinking.

For enquiries and bookings contact Mmutle Kgokong at [arthurk@tshwane.gov.za](mailto:arthurk@tshwane.gov.za) or [eassistants@gmail.com](mailto:eassistants@gmail.com).  
Cost: Learners R20,00; Adults R22,00 (entrance fee included)

## **MEALIE BREAD - NOTHING COMPLICATED!**

---

Keep it simple this festive season.

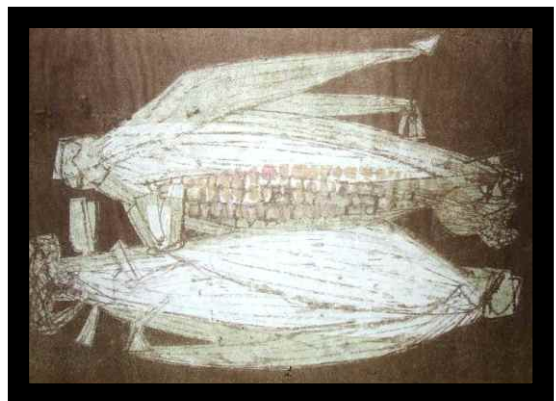
### Ingredients

- 90 ml flour
- 15 ml baking powder
- 60 ml sugar
- 4 eggs
- 2 cans sweetcorn
- 60 ml margarine

### Directions

Mix everything together well. Pour into a greased bread pan.  
Bake for 60 minutes at 180 °C.

Enjoy as a light lunch with a salad or as a side dish with a braai.



Prunella Clough  
*Sweet Corn, 3/8*  
Lithography on paper  
Pretoria Art Museum Collection

## CONTACT DETAILS

---

### **Pretoria Art Museum**

**Museum hours: Tue - Sun, 10:00 - 17:00**  
**Closed on Mondays and public holidays**  
**Admission: Adults - R6,00; Learners - R4,00**  
**Pre-booked tours: Admission fee + R6,00**  
Tel: +27 12 344 1807/8  
Fax: +27 12 344 1809  
Email: [art.museum@tshwane.gov.za](mailto:art.museum@tshwane.gov.za)  
Website: [www.pretoriaartmuseum.co.za](http://www.pretoriaartmuseum.co.za)

PO Box 40925  
Arcadia  
0007  
Pretoria  
South Africa

Cnr Schoeman and Wessels Streets  
Arcadia Park  
Arcadia  
0083  
Pretoria  
South Africa

### **Centurion Art Gallery**

**Gallery hours: Mon - Fri, 10:00 - 17:00**  
**Closed on weekends and public holidays**  
**Admission is free**  
Tel: +27 12 358 3477  
Email: [artg@tshwane.gov.za](mailto:artg@tshwane.gov.za)  
Website: [www.pretoriaartmuseum.co.za](http://www.pretoriaartmuseum.co.za)

PO Box 40925  
Arcadia  
0007  
Pretoria  
South Africa

Cnr Cantonments Road and Unie Ave  
Lyttelton Manor  
Centurion  
South Africa

**Supporting 16 days of activism for no violence against women and children**  
**25 November - 10 December 2009**

